

FABULA

LIVING



Collection 2020

Design Tradition Craftsmanship

Fabula Living

DESIGN TRADITION CRAFTSMANSHIP

Fabula Living has established itself as an international design company deeply rooted in traditional techniques, craftsmanship, uncompromising quality and Danish design. We aim to tell stories with our modern rugs by bringing together design, tradition and simple style with the oriental techniques. It's this behind the scenes creative process that makes the designs stand out. Fabula Living is much more than modern interior design. The careful selection of wool, linen, cotton and other raw materials and shades of colour, the passion and patience, the thickness and the details in the weaving are present like invisible threads in all our rugs.



Collection 2020

A glamorous spark, a dose of classic patterns and an array of beautiful simplicity. The 2020 collection comes with some exciting new designs, all of which have been created with the uncompromising quality that is present within every thread of our work.

We are introducing two contemporary kilim designs and four luscious hand-loom pile rugs. All six designs are bursting with exclusive natural colours like olive, silver grey, petrol, off white and graphite.

Thick, soft, perfectly textured, and made in the highest quality New Zealand wool; Gro, Gisli, Calla and Aster bring sophisticated patterns like herringbone, modern glamour and add to the tactile layered mix celebrated in modern décor.

With calm, muted and subtle hues and understated patterns, the two flat-woven kilim rugs on linen warp, Njord and Felicia, offer a slightly more relaxed and versatile look.

Each of the designs are testament to extraordinary craftsmanship; we work with weavers, who consistently manage to keep up with our demand for complicated techniques making sure each new collection pushes the quality and style one step further.





Contents

4	COLLECTION 2020	54	LILY
8	FELICIA	56	EA
10	GISLI	58	ANGELICA
12	CALLA	60	THOR
14	ASTER	62	VERONICA
16	NJORD	64	BELLIS
18	GRO	66	MYRTUS
20	HUGIN	68	IRIS
22	MUNIN	72	CAMELIA
24	GIMLE	74	TILIA
26	GIMLE	76	LOTUS
28	BALDER	78	ERICA
30	ROLF	80	ROSEMARY
32	FENRIS	82	POPPY
34	TANNE		
36	NEW FREJA	84	FULL COLLECTION
38	GORM		
42	ASK	88	SIZE GUIDE
44	GJALL	90	MADE TO MEASURE
46	GJALL	92	UNDERLAY
48	ODIN	92	HOW TO CARE
50	LOKE	93	CERTIFICATES
52	LOKE		



Felicia

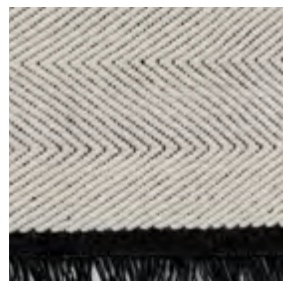
DESIGN / LISBET FRIIS

Hand-woven rug in New Zealand wool on linen warp, reversible

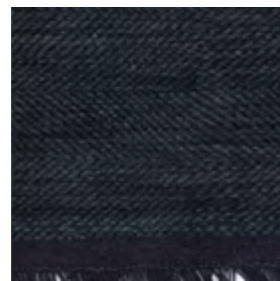
140x200, 170x240, 200x300 cm

Made to measure

With the traditional herringbone pattern enlarged and embedded in the design, Felicia showcases beautiful craftsmanship. The darker shade on the linen warp makes the pattern stand out in this hand-woven kilim rug finished off with graphite fringes. Felicia infuses any space with its relaxed and simple, elegant look in four muted, natural off white and greyish hues.



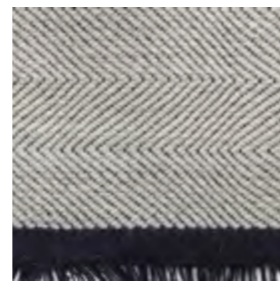
1111 OFF WHITE



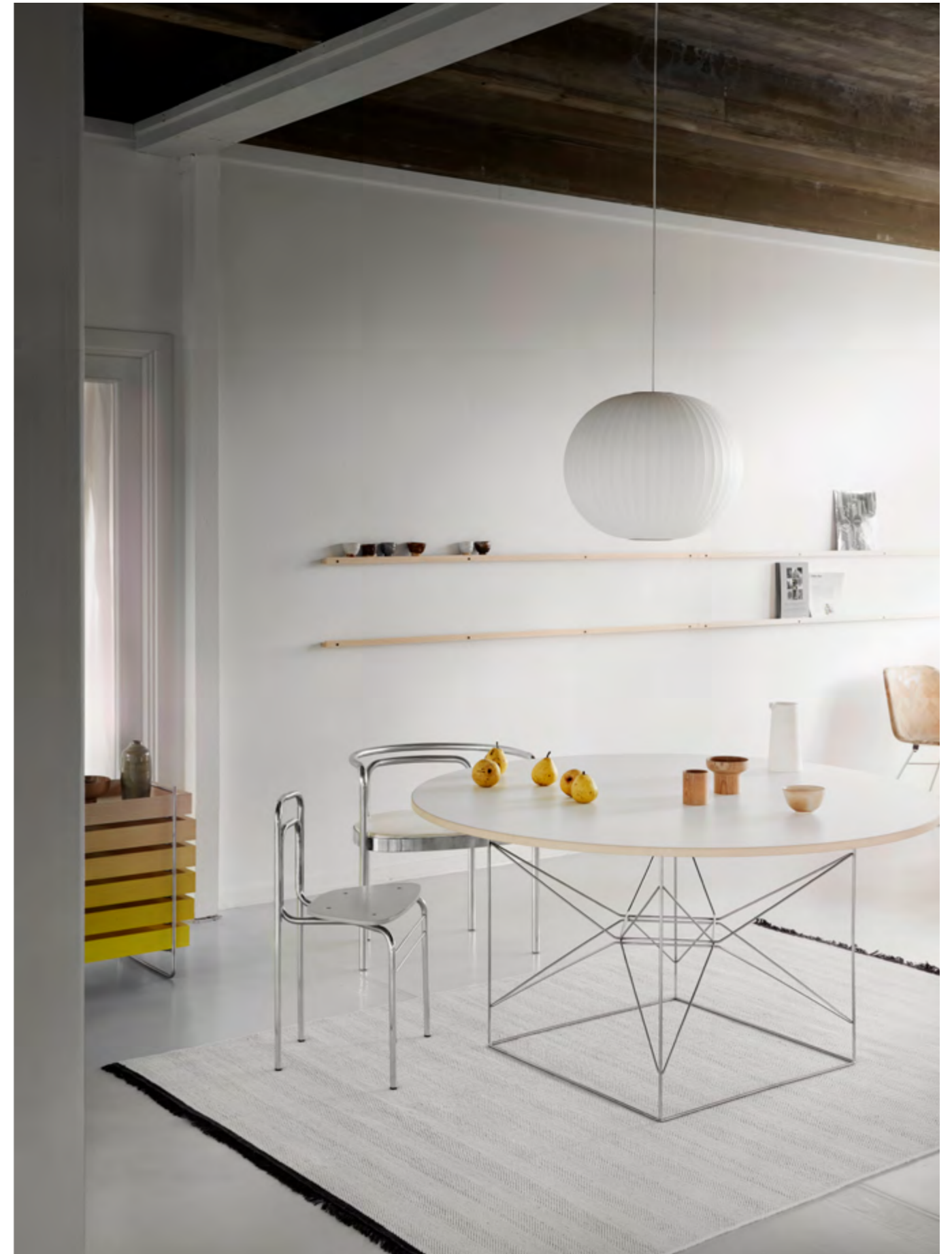
1414 GRAPHITE



1616 GREY



2727 LIGHT GREY





Gisli

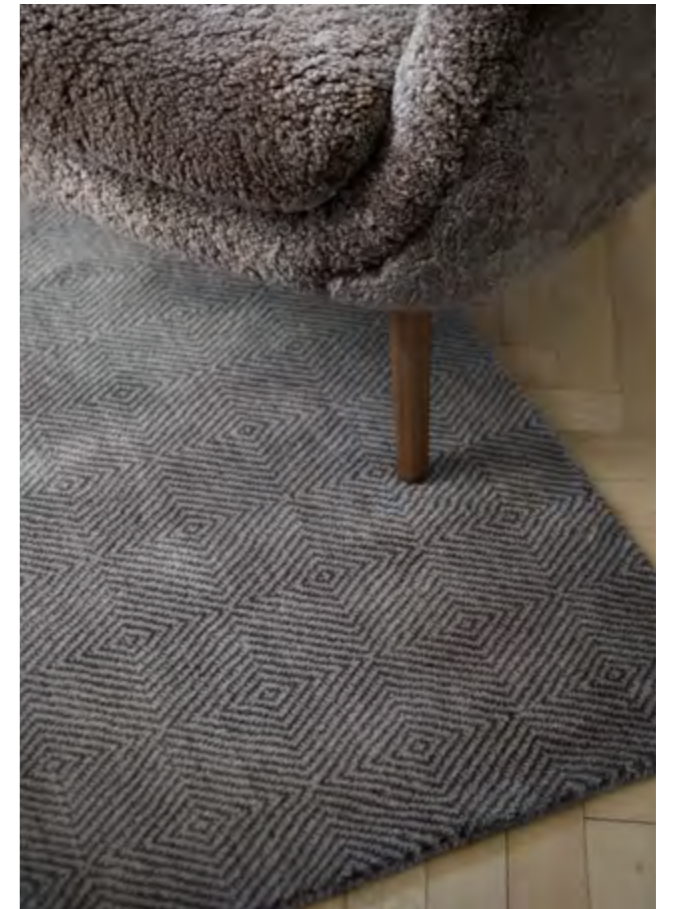
DESIGN / JENS LANDBERG SCHRØDER

Hand-loom pile rug in New Zealand wool on cotton warp

170x240, 200x300 cm

Made to measure

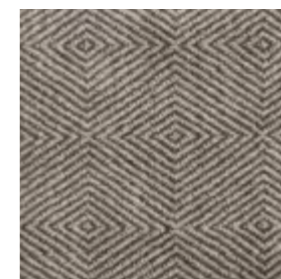
The impeccable finish, the tone-in-tone shades and a stunning diamond pattern make Gisli a rug with a tactile feel bringing an extra touch of exclusivity to most interior. Hand-loomed in the best New Zealand wool on cotton warp for extra quality, this pile rug is classic with an intriguing twist and comes in saturated beige, charcoal and warm grey.



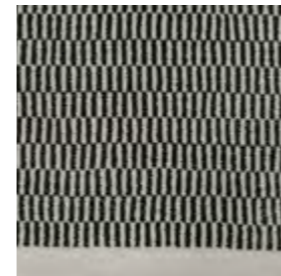
1212 BEIGE



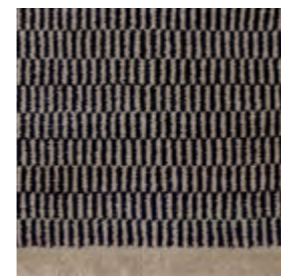
1414 CHARCOAL



1616 WARM GREY



1016 WHITE/GREY



1229 BEIGE/MIDNIGHT BLUE



1512 BLACK/BEIGE



1615 GREY/BLACK



Calla

DESIGN / LISBET FRIIS

Hand-loom pile rug in New Zealand wool and viscose on cotton warp

170x240, 200x300 cm

Made to measure

Calla is a posh, yet ultra-modern hand-loom pile rug balancing elegance and functionality. Drawing subtle inspiration from oriental rugs, it has a lustrous and lively patterned surface, which appears calm thanks to the quality of wool and the meticulous mixing of the colours. With midnight blue and beige hinting on silver, this rug brings timeless beauty to a living room and bedroom.



Aster

DESIGN / LISBET FRIIS

Hand-loom pile rug in New Zealand wool on cotton warp

170x240, 200x300 cm

Made to measure

A luxurious and lush rug with a simple classic look and qualities inspired by nature. This hand-loom pile rug in the best New Zealand wool is so thick that it resembles walking on the soft forest ground. Aster has a striped structure with a simple edge, comes in grey, olive, almost moss green and complements most interior styles.

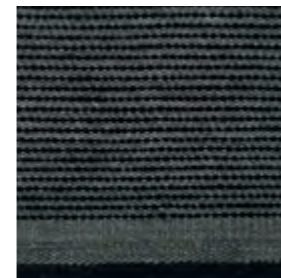


4715 OLIVE/BLACK

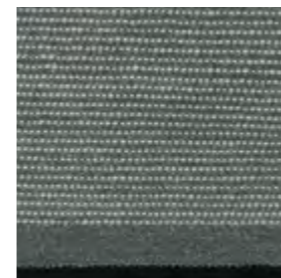


1615 GREY/BLACK





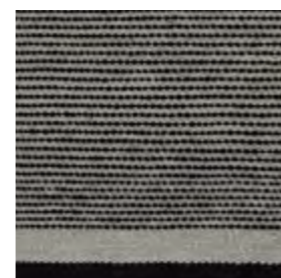
1415 CHARCOAL/BLACK



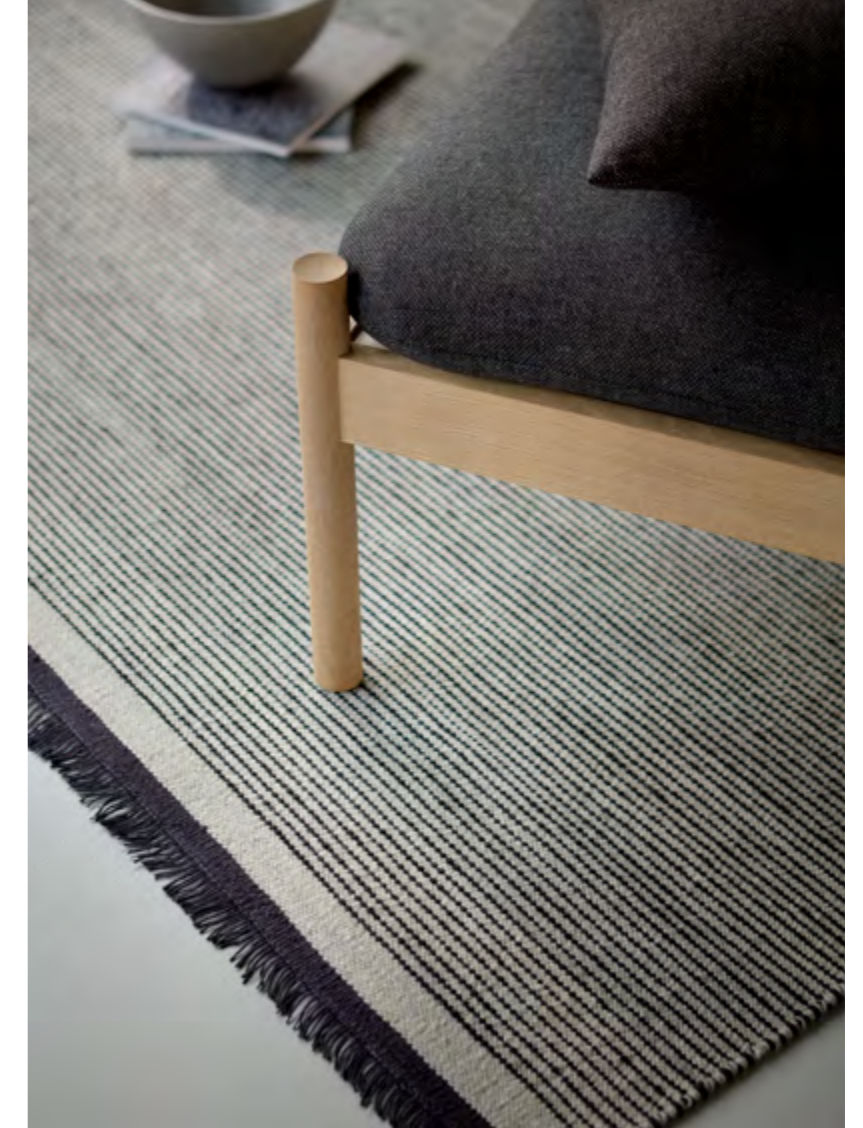
1610 GREY/WHITE



2710 LIGHT GREY/WHITE



2715 LIGHT GREY/BLACK



Njord

DESIGN / JENS LANDBERG SCHRØDER

Hand-woven rug in New Zealand wool on linen warp, reversible

140x200, 170x240, 200x300, 250x350 cm

Made to measure

Njord is a versatile, understated, and undeniably Scandinavian kilim rug available in four colour combinations, all leaning towards a calm, natural muted palette of silvery and greyish tones. Using the special gabbeh-dye technique, only partly dyeing the yarn, gives a lively flare to the striped design, which is elegantly finished off with black or bluish grey fringes. The fine weaving technique makes the rug reversible.

Gro

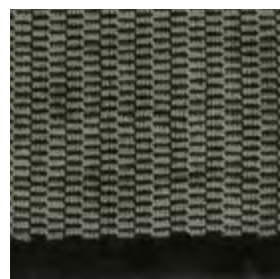
DESIGN / JENS LANDBERG SCHRØDER

Hand-loom pile rug in New Zealand wool on cotton warp

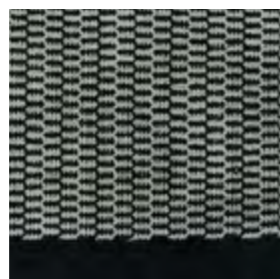
170x240, 200x300, 250x350 cm

Made to measure

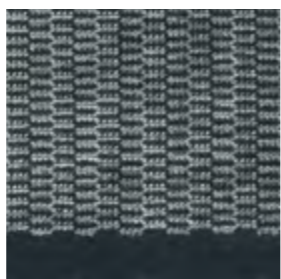
Graphic shapes paired with off white and beige and natural contrast colours form a stunning pattern framed with a simple edge. The fairly complicated pattern on this hand-loom pile rug has required next level craftsmanship. The top-quality New Zealand wool has been woven and cut to create a shimmering look changing with the light.



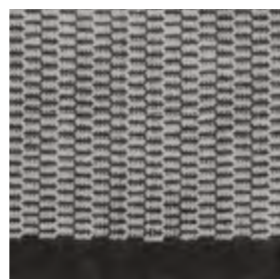
4712 OLIVE/BEIGE



1511 BLACK/OFF WHITE



4812 PETROL/BEIGE

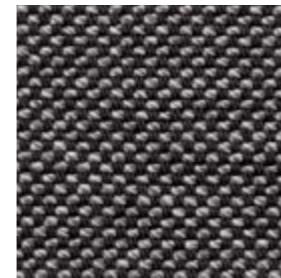


1611 GREY/OFF WHITE

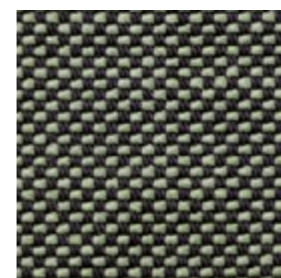




1213 SAND/STONE



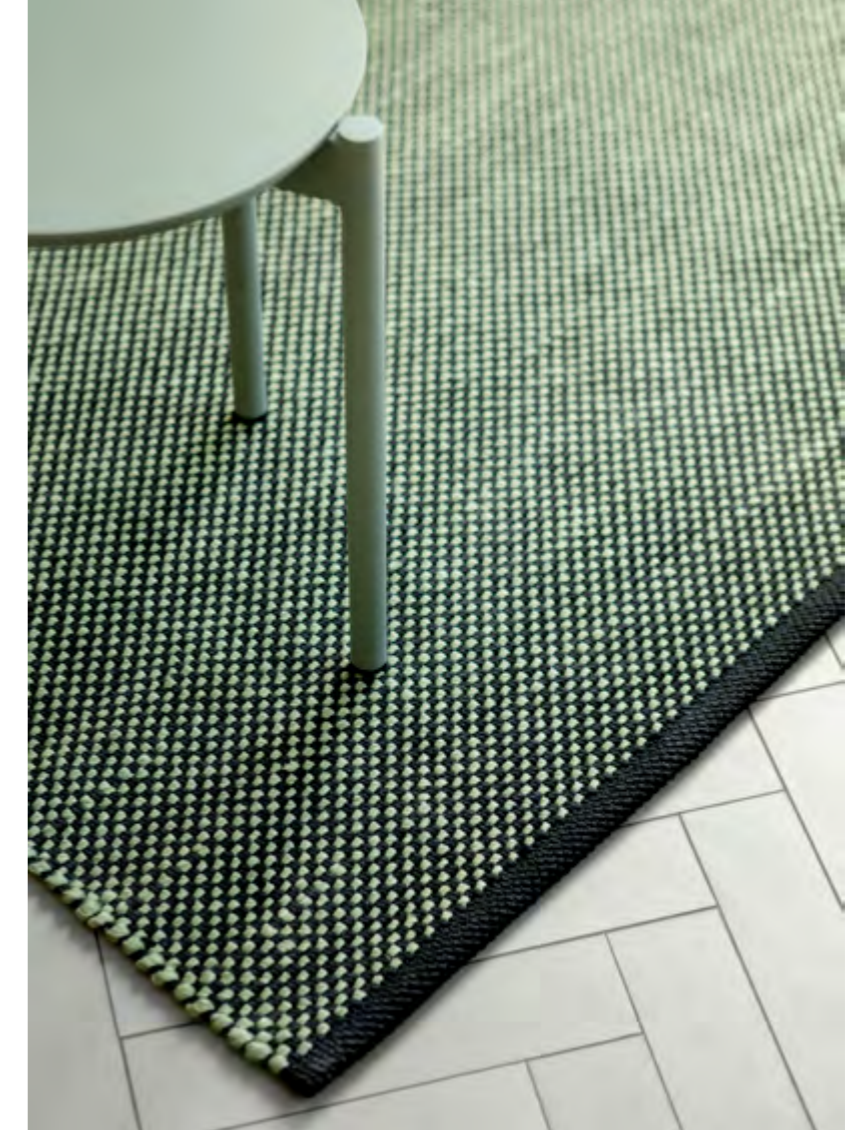
1516 BLACK/GREY



1518 BLACK/FOREST



1548 BLACK/OLIVE



Hugin

DESIGN / JENS LANDBERG SCHRÖDER

Hand-woven in-and outdoor rug in polypropylene, polyester and viscose

200x300, 250x350 cm

With a perfect blend of high quality and clean, simple style, the Hugin rug can transform a balcony or terrace to a cosy outdoor living room. It's available in a range of natural colours and hand-woven with an advanced mix of man-made textile fibres making it durable enough to withstand water and sunlight. This rug is slightly finer than the more rustic sister design, Munin, and has discreet two-toned pattern. The design also adds a feeling of comfort and definition to a conservatory, or works perfectly as a stylish and practical choice for a kitchen or dining room.

Munin

DESIGN / JENS LANDBERG SCHRØDER

Hand-woven in- and outdoor rug in polypropylene, polyester and viscose

200x300, 250x350 cm

Made with our uncompromising approach to craftsmanship, the Munin rug meets the highest standards of durability and aesthetics. The range of nature's own tones such as driftwood, stone, forest, and pinewood harmoniously complement the surroundings and create a cosy and elegant update to any outdoor space. By adding viscose to the mix of man-made textile fibres, the simple, rustic design stands out with a subtle shine. The good quality and the precise weave make the rug easy to keep and resistant to water and sunlight. The design also adds a feeling of comfort and definition to a conservatory, or works perfectly as a stylish and practical choice for a kitchen or dining room.



1212 DRIFTWOOD



1313 PINEWOOD



1818 FOREST



1414 STONE





Gimle

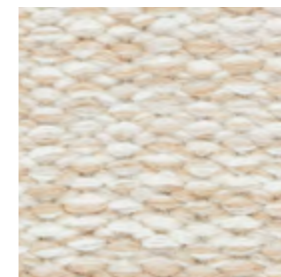
DESIGN / JENS LANDBERG SCHRØDER

Hand-woven rug in New Zealand wool on cotton warp, reversible

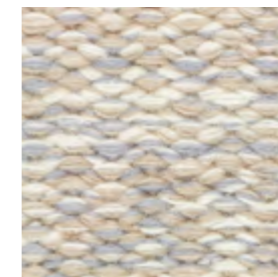
140x200, 170x240, 200x300 cm

Made to measure

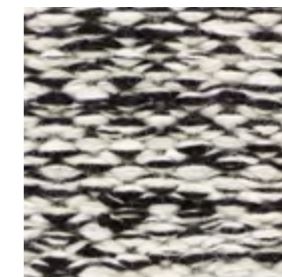
A shimmering look brings out the two shades creating a stunning visual.
This is the thickest flat pile rug in the collection and is extremely versatile
when decorating a home..



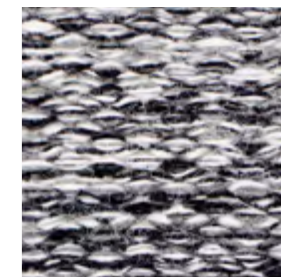
1011 WHITE/OFF WHITE



1211 BEIGE/GREY



1215 OFF WHITE/BLACK



1511 BLACK/OFF WHITE

Gimle

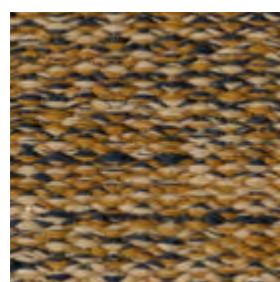
DESIGN / JENS LANDBERG SCHRØDER

Hand-woven rug in New Zealand wool on cotton warp, reversible

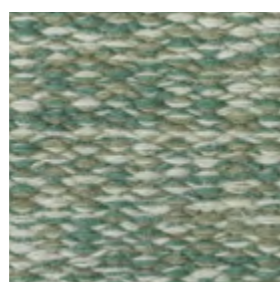
140x200, 170x240, 200x300 cm

Made to measure

With three new golden and soft natural colours, the popular, classic design Gimle now comes in exciting range drawing from the Scandinavian natural colour palette. The soft leaf green, willow, golden burnt cork, and the autumn faded rose maple harmoniously cover the range of a leaf's natural defoliation. Each shade complements the thick flat pile quality and the stunning two shade mottling effect on the hand-woven rug in New Zealand wool. With seven different colour combinations, Gimle is extremely versatile when decorating a home.



5252 CORK



1818 WILLOW



3030 MAPLE



Balder

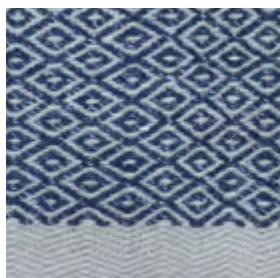
DESIGN / JENS LANDBERG SCHRÖDER

Hand-woven rug in New Zealand wool and linen on cotton warp, reversible

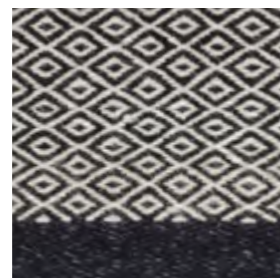
140x200, 170x240, 200x300 cm

Made to measure

A simple and sophisticated rug using hand-spun high-quality yarn. Mixing wool and linen in a very tight weave gives the classic goose eye pattern deliberately a slightly worn surface suggesting that this rug will only become more beautiful with time. The colour palette features golden honey, crisp beech leaves, umbra, forest grey, black and midnight. All shades are strong enough to stand out, soft enough to blend into a natural colour scheme and complement all wooden floor.



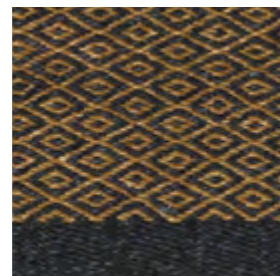
1629 GREY/MIDNIGHT BLUE



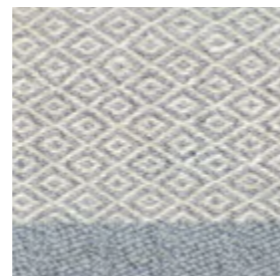
1516 BLACK/GREY



1818 FOREST



5252 UMBRA



1627 GREY/LIGHT GREY





Rolf

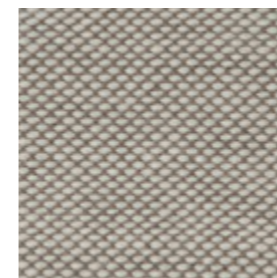
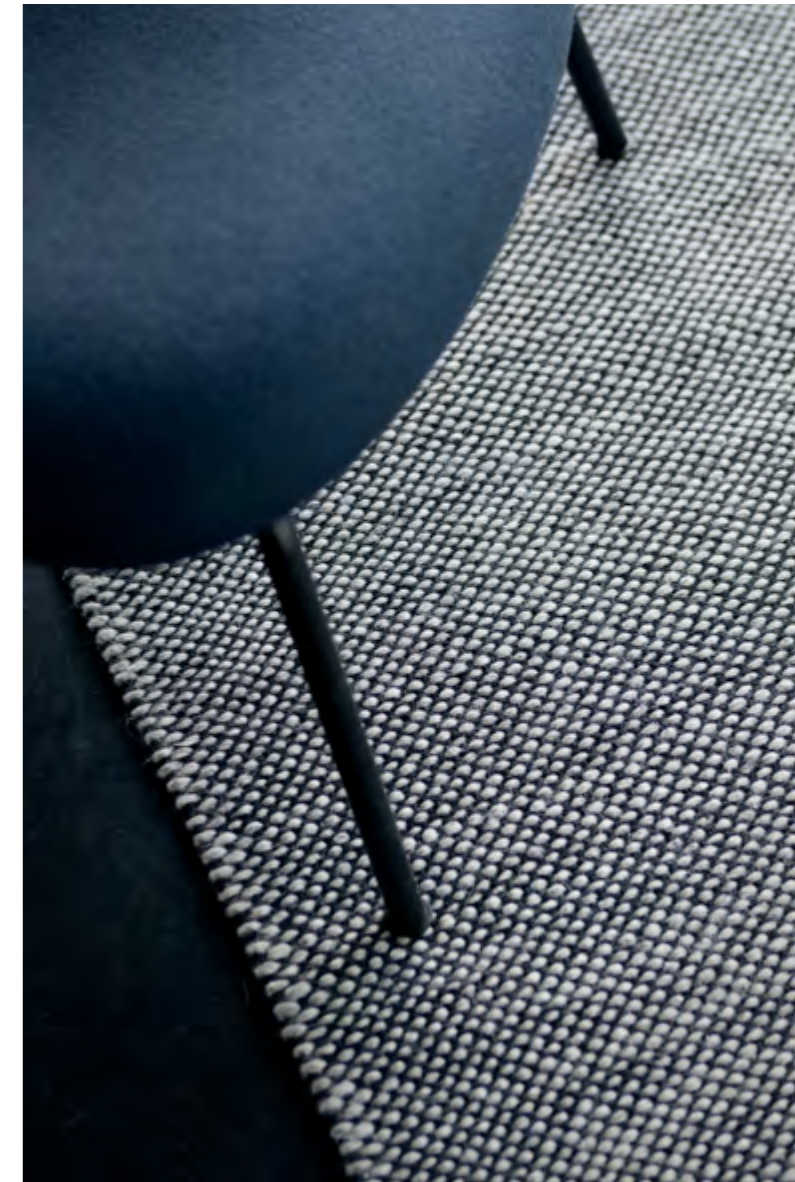
DESIGN / JENS LANDBERG SCHRØDER

Hand-woven rug in natural coloured New Zealand wool on cotton warp, reversible

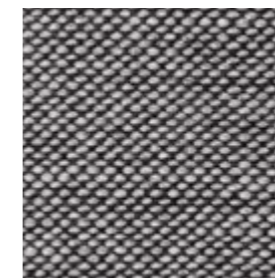
140x200, 170x240, 200x300 cm

Made to measure

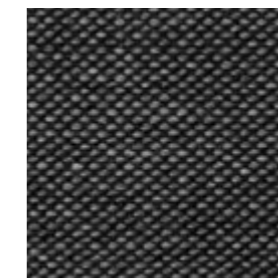
With a clean and simple design and pure wool in its natural white, grey and charcoal hues, this hand-woven rug is a step back to nature. The wool is undyed and the subdued life in the tones and textures comes from nature's own beautiful imperfection. The Rolf rug meets a strong desire for natural and sustainable design. The thick quality makes it a very durable rug with the added bonus of being reversible, which can double the life span.



1112 OFF WHITE/BEIGE



1615 GREY/BLACK



1415 CHARCOAL/BLACK



Fenris

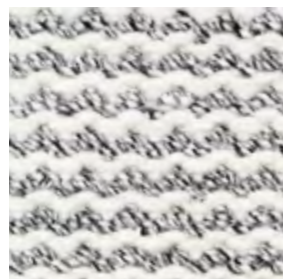
DESIGN / JENS LANDBERG SCHRØDER

Hand-woven rug in New Zealand wool and raw wool on cotton warp, reversible

140x200, 170x240, 200x300, 250x350 cm

Made to measure

This slightly rustic hand-woven rug in a thick quality with a soft natural colour scheme is a very harmonic design, complementing different types of wood and styles in a home. The tones and texture come out intentionally irregular thanks to the combination of a shimmering hand-spun natural wool yarn and pure New Zealand wool.



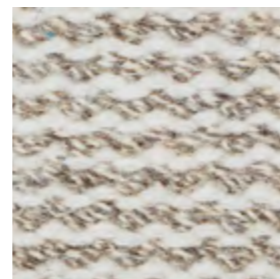
1116 OFF WHITE/GREY



1629 GREY/MIDNIGHT BLUE



1525 BLACK/NATURE



1125 OFF WHITE/NATURE



Tanne

DESIGN / JENS LANDBERG SCHRØDER

Hand-woven rug in New Zealand wool on cotton warp, reversible

140x200, 170x240, 200x300 cm

Made to measure

This reversible hand-woven rug in pure New Zealand wool fuses a simple contemporary pattern, soft colours and exquisite quality. This very durable rug comes in five different colour combinations, blending natural hues.



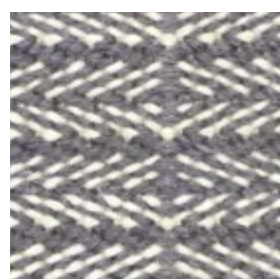
1015 WHITE/BLACK



1510 BLACK/WHITE



1113 OFF WHITE/BROWN



1610 GREY/WHITE



1016 WHITE/GREY



New Freja

DESIGN / JENS LANDBERG SCHRØDER

Hand-woven rug in New Zealand wool on cotton warp, reversible

140x200, 170x240, 200x300 cm,

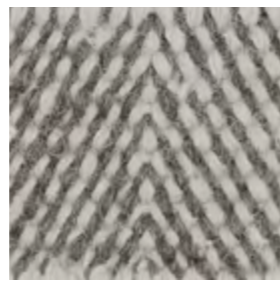
One of the pure New Zealand wool rugs, hand-woven and made in a classic simple pattern that stands out and also blends in a modern home. The colours are a classic, natural mix of brown, grey and soft natural beige and off white.



1013 WHITE/BROWN



1025 WHITE/NATURE



1616 GREY





Gorm

DESIGN / JENS LANDBERG SCHRØDER

Hand-woven rug in Gabbeh-dyed New Zealand wool on cotton warp

140x200, 170x240, 200x300 cm
Made to measure

With a pattern inspired by a maths matrix this rug suits the clean-lined and cubistic design favoured in many modern homes. The wool has a flaming expression thanks to the special Gabbeh dye, which only partly colours the wool. Pure linen has been woven into the mix making it a tight and extremely durable rug, which comes in beautiful classic charcoal and light grey.



1414 CHARCOAL



2727 LIGHT GREY



A rug transforms the mood in a room.
Open up a space with a muted palette
and create intimacy with darker hues.



Ask

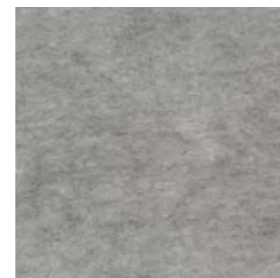
DESIGN / JENS LANDBERG SCHRØDER

Hand-loom pile rug in Gabbeh-dyed New Zealand wool and linen on cotton warp

160x230, 200x300 cm

Made to measure

The uniqueness of this hand loom pile rug stems from a determined process of attention to every single detail. The quality of the New Zealand wool is outstanding and the many experiments mixing wool and a little bit of linen for contrast has resulted in a thicker and more exclusive rug. The linen adds a stylish lustre and a gentle Gabbeh-dye brings the soft shimmering in the pile. The choice of nature inspired colours completes the soft and exclusive design, which is versatile and makes an impact in any room.



1616 GREY



1414 CHARCOAL



1212 BEIGE





Gjall

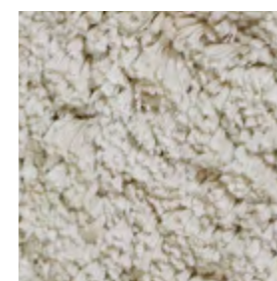
DESIGN / JENS LANDBERG SCHRØDER

Hand-woven high-pile rug in viscose on cotton warp

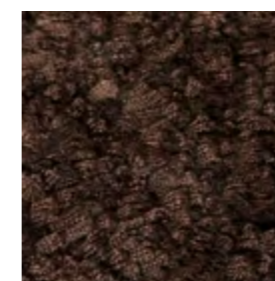
160x230, 200x300 cm

Made to measure

This very thick, pure viscose high-pile rug is the essence of cosy. The three-dimensional shading effect enhances the softness and the expression of colours, which range from subtle neutrals off white, grey, charcoal, petrol green to beautiful shades like pearl, topaz, amber and ruby inspired by nature's precious stones.



1212 BEIGE



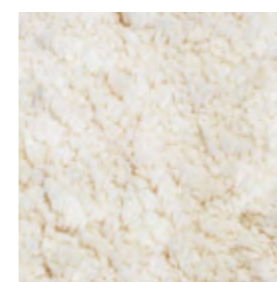
1313 BROWN



1616 GREY



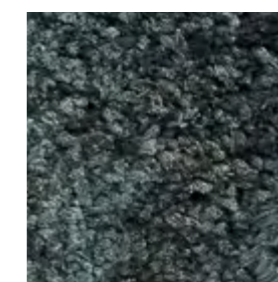
3939 DARK BEIGE



1010 WHITE



1414 CHARCOAL



4848 PETROL



Gjall

DESIGN / JENS LANDBERG SCHRØDER

Hand-woven high-pile rug in viscose on cotton warp

160x230, 200x300 cm

Made to measure

This very thick, pure viscose high-pile rug is the essence of cosy. The three-dimensional shading effect enhances the softness and the expression of colours, which range from subtle neutrals off white, grey, charcoal, petrol green to beautiful shades like pearl, topaz, amber and ruby inspired by nature's precious stones.



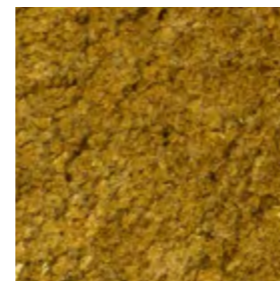
5252 AMBER



3030 PEARL



5353 RUBY

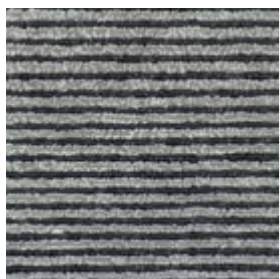


5151 TOPAZ





1214 BEIGE/CHARCOAL



1615 GREY/BLACK

Odin

DESIGN / JENS LANDBERG SCHRØDER

Hand-knotted pile rug in New Zealand wool and linen on cotton warp

170x240, 200x300 cm

Made to measure

Using old Nepalese techniques this thick pile and loop rug has been hand-knotted in New Zealand wool and linen and some of the loops have then been cut creating the unique surface. The signature blend of quality yarn makes Odin a classic in our collection and the gentle two-toned shimmering softens the graphic look.





Loke

DESIGN / JENS LANDBERG SCHRØDER

Hand-loom pile rug in New Zealand wool on cotton warp

170x240, 200x300, 250x350 cm

Made to measure

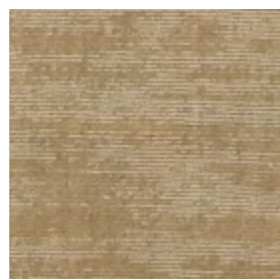
A modern piled rug, made in the finest New Zealand wool, which has a shiny and intense two-toned shimmer despite being uni-coloured. After weaving, the loops have been partly cut using a shaving technique, which has softened the surface and created the enhanced expression of colours.



2727 LIGHT GREY



3737 DUSTY GREEN



1212 BEIGE





Loke

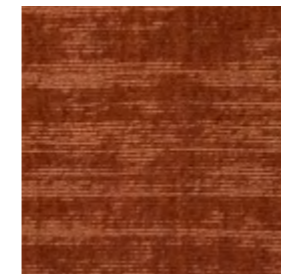
DESIGN / JENS LANDBERG SCHRØDER

Hand-loom pile rug in New Zealand wool on cotton warp

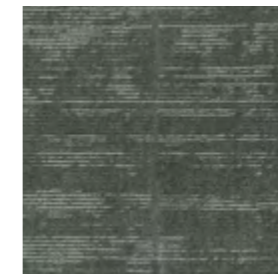
170x240, 200x300, 250x350 cm

Made to measure

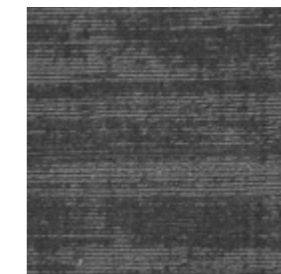
A modern piled rug, made in the finest New Zealand wool, which has a shiny and intense two-toned shimmer despite being uni-coloured. After weaving, the loops have been partly cut using a shaving technique, which has softened the surface and created the enhanced expression of colours.



2020 TERRACOTTA



4848 PETROL



1616 GREY



1414 CHARCOAL



Lily

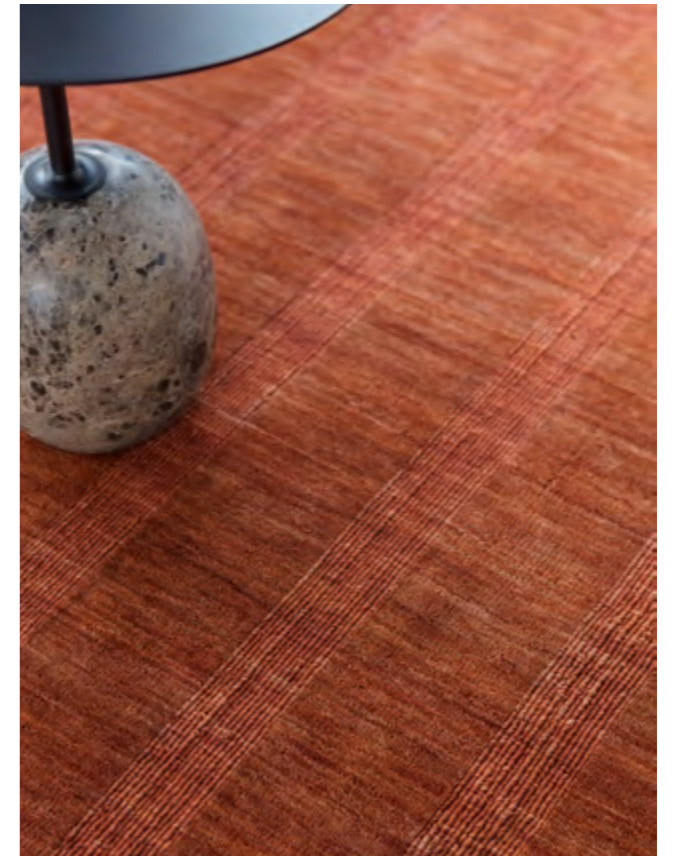
DESIGN / LISBET FRIIS

Hand-loom pile rug in Gabbeh-dyed New Zealand wool on cotton warp

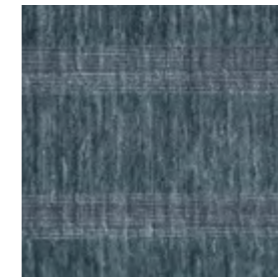
170x240, 200x300 cm

Made to measure

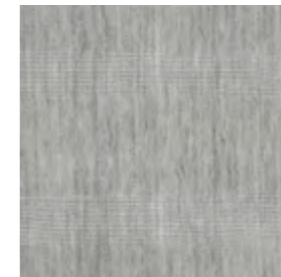
Four exclusive vivacious colours bring a sense of lush fairy tale to the Lily rug, which is woven with the same hand-loom pile technique as Loke. Lisbet Friis has added her signature touch and created soft harmony and contrasts with stripes. The wool piles have been cut in a special way creating an effect of changing the shine and texture depending on how the light falls on the rug. The Gabbeh-dye enhances the rich natural colours.



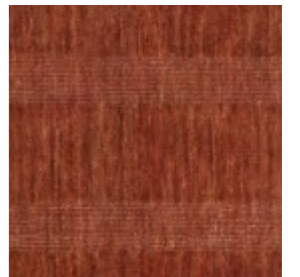
1414 SMOKE



2929 NIGHT SKY



1212 MARBLE



1919 ORIENTAL RED



Ea

DESIGN / MOGENS KOCH

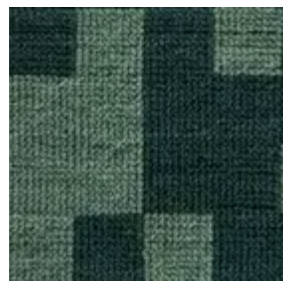
Hand-woven loop rug in New Zealand wool on cotton warp

160x240, 200x280 cm

Made to measure

Please be aware when ordering a tailored Ea rug, the desired length and width need to be divisible by 40 cm.

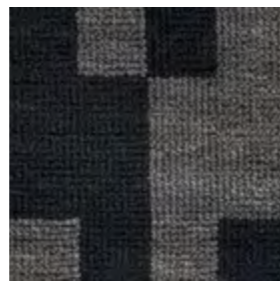
Designed in 1959 by Mogens Koch, one of the iconic Danish architects, and manufactured with Fabula Living's attention to detail and quality, Ea unites the best of timeless design and modern craftsmanship. The charismatic graphic square pattern gives the rug a subtle presence in a room without dominating the rest of the décor. Made of the finest New Zealand wool, the carefully developed top-of-the-line quality of this rug makes possible the perfect balance of contrasts and harmony honouring the beautiful mid-twentieth-century design.



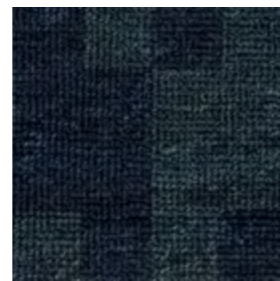
1818 GREEN



1212 BEIGE

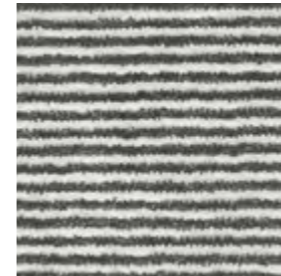


1414 CHARCOAL

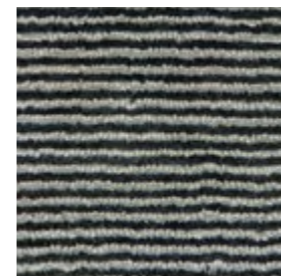


2929 OCEAN

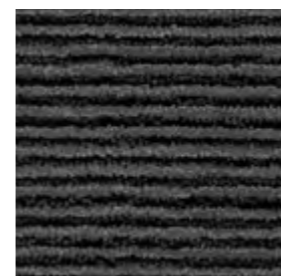




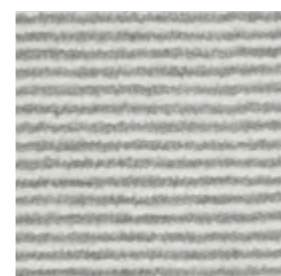
1411 CHARCOAL/OFF WHITE



1416 CHARCOAL/GREY



1615 GREY/BLACK



2711 LIGHT GREY/OFF WHITE



Angelica

DESIGN / LISBET FRIIS

Hand-loom pile rug in New Zealand wool and viscose on cotton warp

140x200, 170x240, 200x300 cm

Made to measure

The combination of viscose mixed with the wool and the beautiful colours created by the special hand dye technique Gabbeh-dye creates a soft shimmer that looks almost like velvet. The Angelica hand-woven rug comes in the same shades of off white, grey and black as Erica. A perfect solution if you want different hand-made rugs in a matching colour scheme.



Thor

DESIGN / JENS LANDBERG SCHRØDER

Hand-woven high-pile rug in New Zealand wool on cotton warp

160x230, 200x300 cm
Made to measure

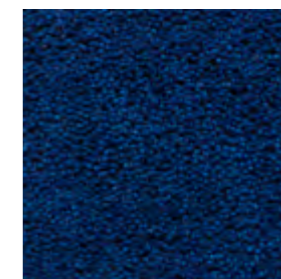
This soft, thick quality high-pile rug is made in the best quality New Zealand wool with a carefully selected palette of warm and cool neutrals and bursts of midnight blue and ochre.



1111 OFF WHITE



1616 GREY



2929 MIDNIGHT BLUE



3232 OCHRE

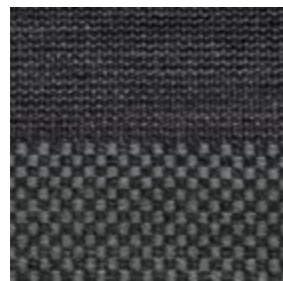
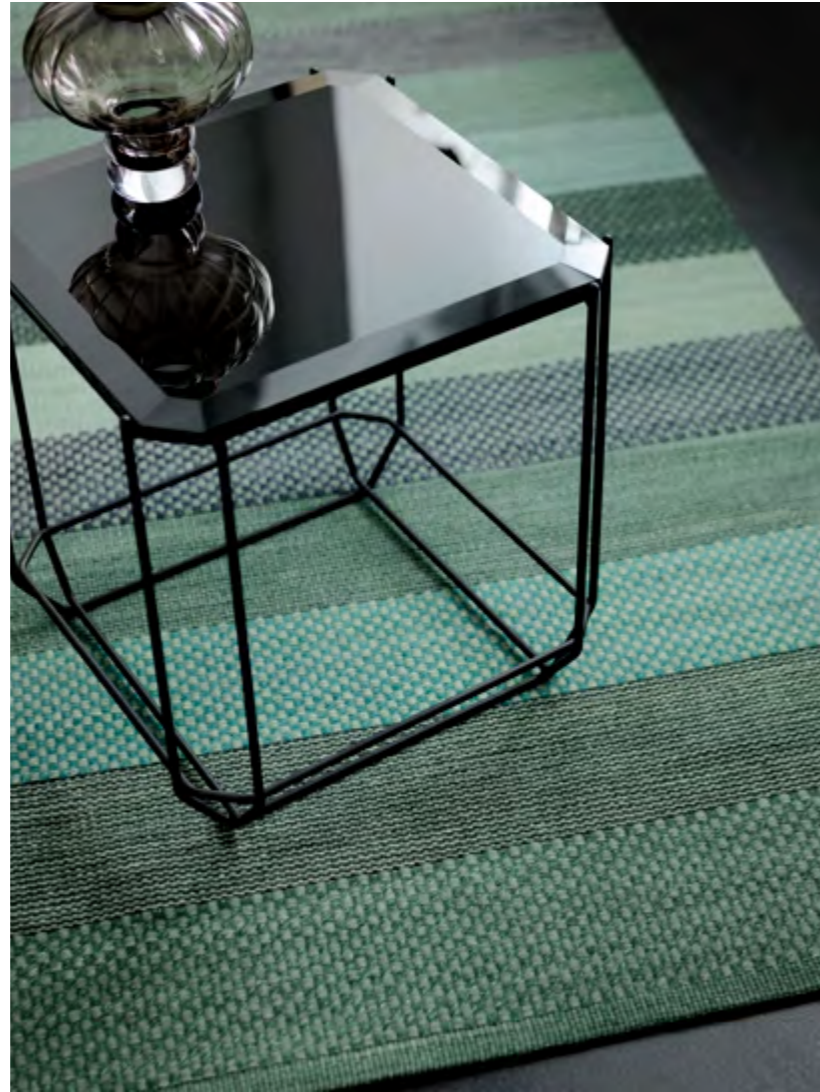
Veronica

DESIGN / LISBET FRIIS

Hand-woven rug in Gabbeh-dyed New Zealand wool on cotton warp

80x240, 140x200, 170x240, 200x300 cm
Made to measure

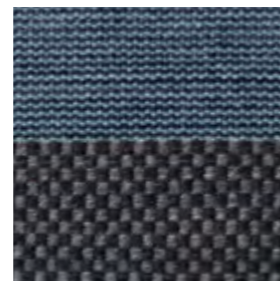
An inviting play with patterns guided by a carefully selected palette of strong calming indigo, deep midnight blue and two new shades of moss green and grey with notes of blue and black make this hand-woven rug in New Zealand wool a beautiful design classic. Quietly saluting the Swedish rag rugs, Veronica brings an instant feel of style and comfort to a room. Like the sister designs of Iris and Myrtus, this is a simple, contemporary style with refined pattern and a three-dimensional visual effect thanks to the special Gabbeh-dye technique.



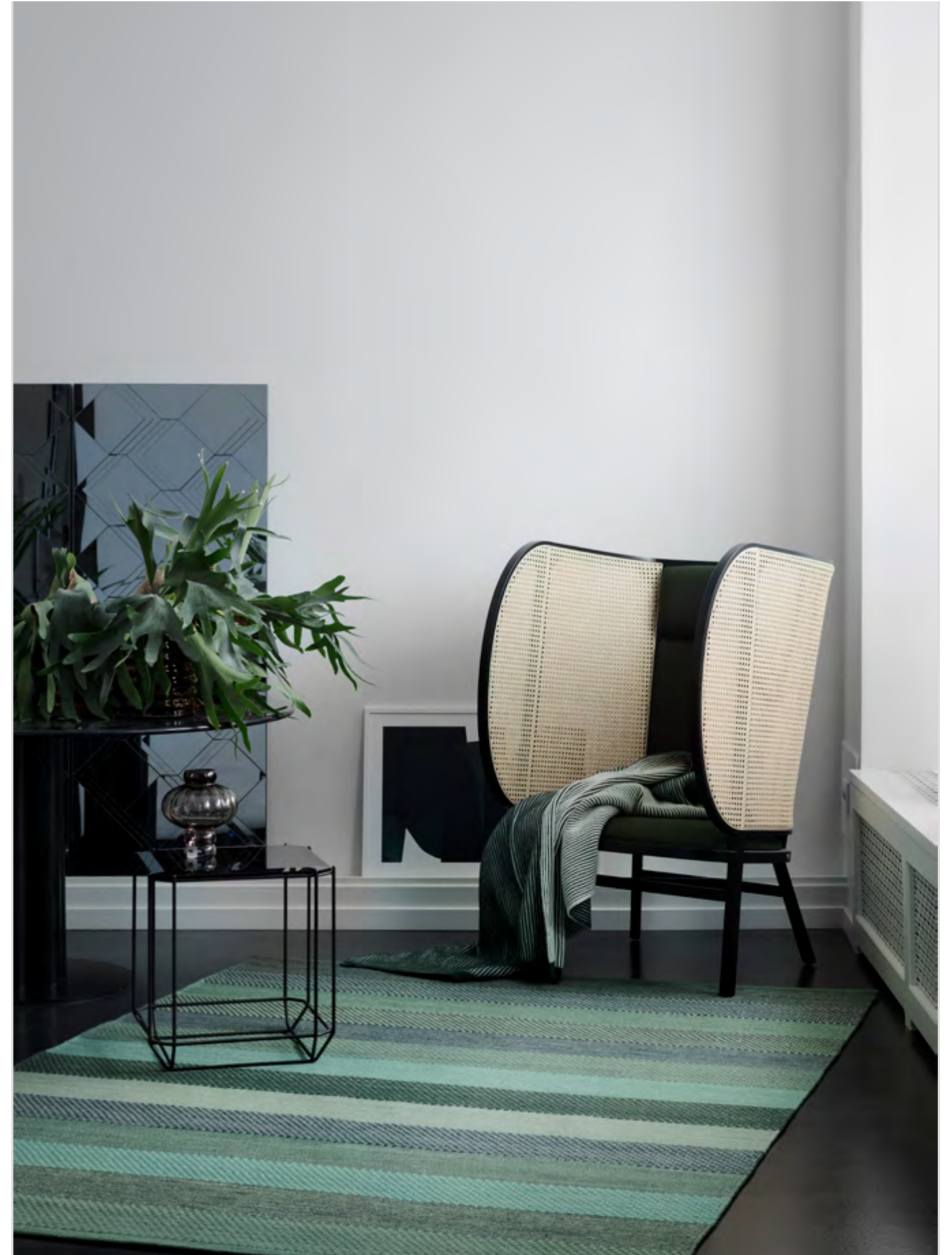
1616 GREY



1818 GREEN



1717 BLUE



Bellis

DESIGN / LISBET FRIIS

Hand-woven rug in Gabbeh-dyed New Zealand wool on cotton warp, reversible

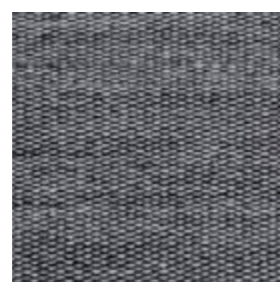
140x200, 170x240, 200x300 cm

Made to measure

Bellis is the new generation of Erica; a thicker, reversible rug in gabbeh-dyed New Zealand wool available in four different colours resembling the changes of the sky throughout a day. From soft, beautiful nude like a rose quartz gemstone to a twilight charcoal grey. All very different colours yet they all have the same depth and tone and work harmoniously together in a room or throughout the house. Up close, the weave reveals tiny dots bringing out the beauty in the colours, which from a distance blur together into a more monochrome shade.



1416 CHARCOAL/GREY



1427 CHARCOAL/LIGHT GREY



3011 ROSE/OFF WHITE



3811 LIGHT BLUE/OFF WHITE





Myrtus

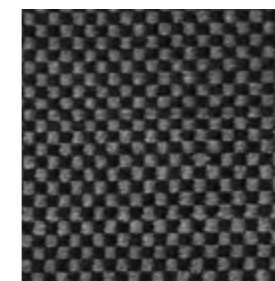
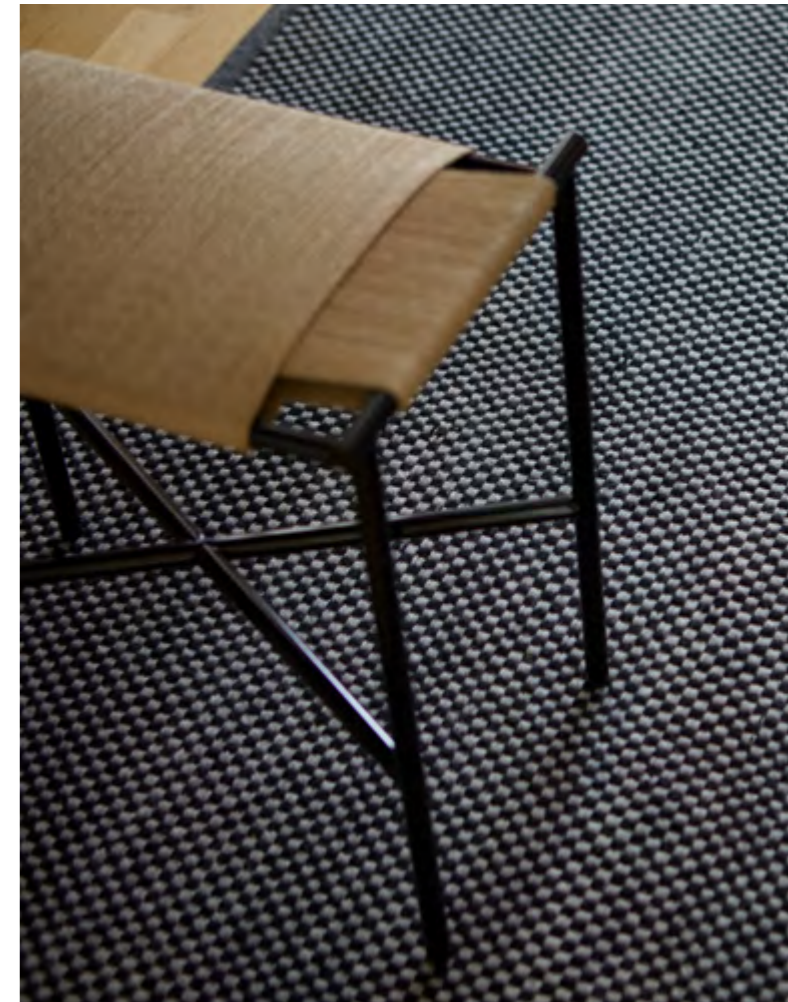
DESIGN / LISBET FRIIS

Hand-woven rug in Gabbeh-dyed New Zealand wool on cotton warp

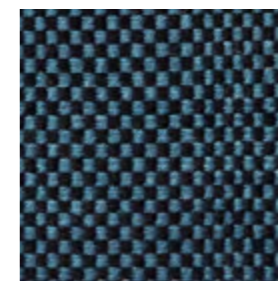
140x200, 170x240, 200x300, 250x350 cm

Made to measure

This clean, definitive yet exciting square pattern in this hand-woven New Zealand rug is the result of a careful visual balancing act. Precise play with colours, pattern and the special Gabbeh-dye bring the tiny little squares alive – changing in appearance from textural shimmering to a solid shade. Just like the sister designs of Iris and Veronica, this rug is a very simple, classic style with a vibrant lively touch.



1514 BLACK/CHARCOAL



1529 BLACK/MIDNIGHT BLUE



1516 BLACK/GREY



Iris

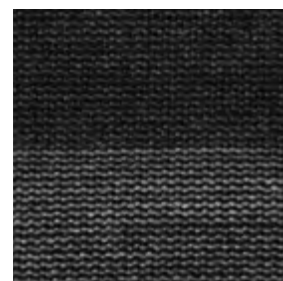
DESIGN / LISBET FRIIS

Hand-woven rug in Gabbeh-dyed New Zealand wool on cotton warp

140x200, 170x240, 200x300 cm

Made to measure

Warm and dark or light and bright stripes. This hand-woven contemporary, classic rug comes in three colour combinations capturing the essence of nature's darkness and lightness. Just like the sister designs of Myrtus and Veronica, the pattern creates its own simple rhythm. The Gabbeh-dyeing technique and the colours bring a vibrant lively touch to a very subtle and elegant style.



1415 CHARCOAL/BLACK



1517 BLACK/BLUE



1627 GREY/LIGHT GREY





Camelia

DESIGN / LISBET FRIIS

Twill-woven, hand-made rug in New Zealand wool and linen

170x240, 200x300 cm

Stunning on its own and a stylish addition in most settings. With the asymmetrical square pattern, this twill woven rug in New Zealand wool and linen fills a room with a creative graphic pattern and deep stunning colours. These features come from the thick quality of the wool and the refined depth of the linen.





Tilia

DESIGN / LISBET FRIIS

Twill-woven, hand-made rug in New Zealand wool and linen

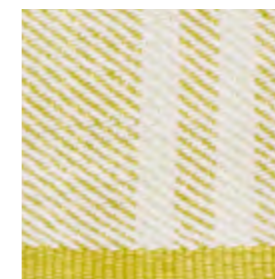
170x240, 200x300 cm

Made to measure

This very clean, simple and light design adds a calm colour touch in any living room or bedroom. The bright yellow, blue, dark nude and dusty green look sharp in an elegant way. Almost pure white New Zealand wool on the surface creates a distinct and elegant shimmering play with the underlining colours and the mixed in linen.



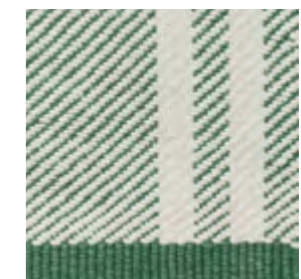
1710 BLUE/WHITE



2310 YELLOW/WHITE



3010 DARK NUDE/WHITE



3710 DUSTY GREEN/WHITE



Lotus

DESIGN / LISBET FRIIS

Twill-woven, hand-made rug in New Zealand wool and linen

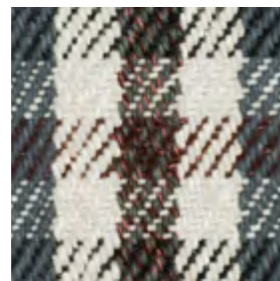
170x240, 200x300 cm

Made to measure

With a well-balanced chequer design in a stunning colour range of dark blue, aqua marine, grey and mahogany, the Lotus design introduces a quality that pushes the boundaries. Advanced craftsmanship, techniques and linen blended with the wool have made it possible to create a high quality rug with a three dimensional shimmering surface.



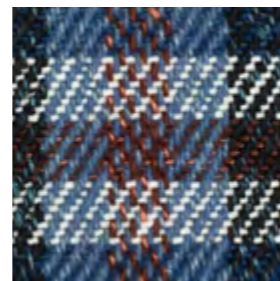
1615 GREY/BLACK



1642 GREY/MAHOGANY



1715 BLUE/BLACK



1742 BLUE/MAHOGANY



Erica

DESIGN / LISBET FRIIS

Hand-woven rug in Gabbeh-dyed New Zealand wool on cotton warp

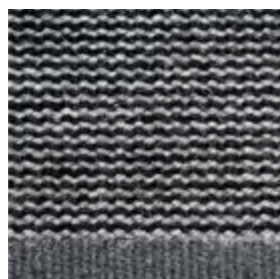
140x200, 170x240, 200x300, 250x350 cm

Made to measure

The thin stripes and the elegant shimmering created by a special dip dye Gabbeh-dye distinguish this subtle playful rug. This technique is also used for the same velvety shades of grey and light blue tones featured on the Angelica design making these two different hand-made rugs easy to mix for a layered texture in a stylish interior.



1411 CHARCOAL/OFF WHITE



1516 BLACK/GREY



2711 LIGHT GREY/OFF WHITE



3811 LIGHT BLUE/OFF WHITE





Rosemary

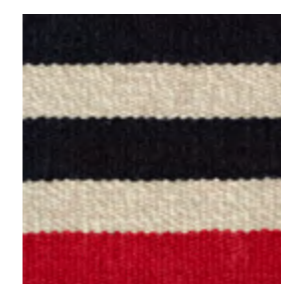
DESIGN / LISBET FRIIS

Hand-woven rug in New Zealand wool on cotton warp, reversible

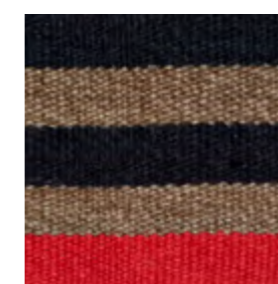
90x250, 140x200, 170x240, 200x300 cm

Made to measure

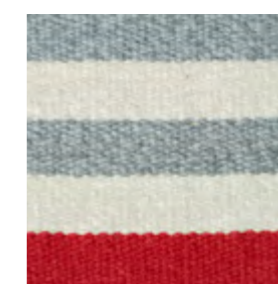
Bold yet clean and elegant - the red stripe makes this statement design stand out in any home without compromising on our design core - quality and simplicity. Each stripe is spun out of two threads, and this rug is a prime example of the attention that goes into every part of our process.



1512 BLACK/BEIGE



1522 BLACK/MAUVE



1627 GREY/LIGHT GREY



Poppy

DESIGN / LISBET FRIIS

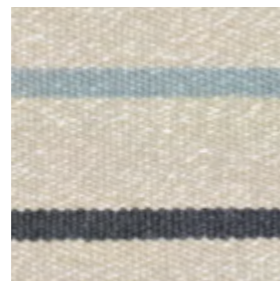
Hand-woven rug in New Zealand wool and linen on cotton warp, reversible.

80x240, 140x200, 170x240, 200x300 cm
Made to measure

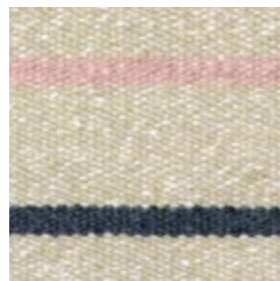
Fresh colour splashes of yellow, nude and soft blue mixed with beige bring a bit of fun to this thin and tight hand-woven rug in wool and linen. This design is fresh and lights up the room and the neutral base in all three colour variations makes sure it's not too delicate and easy to look after.



2312 YELLOW/BEIGE



3812 LIGHT BLUE/BEIGE

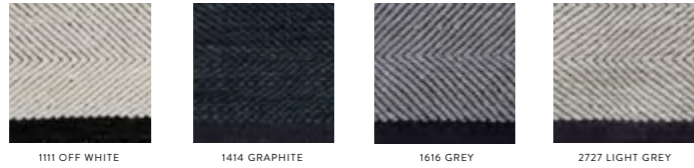


3012 NUDE/BEIGE



Felicia

140x200, 170x240,
200x300 cm
Made to measure
Page 8



Gisli

170x240, 200x300 cm
Made to measure
Page 10



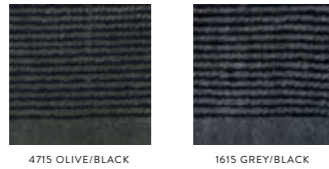
Calla

170x240, 200x300 cm
Made to measure
Page 12



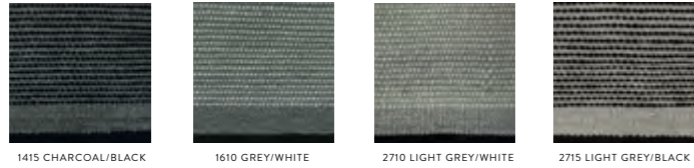
Aster

170x240, 200x300 cm
Made to measure
Page 14



Njord

140x200, 170x240,
200x300, 250x350 cm
Made to measure
Page 16



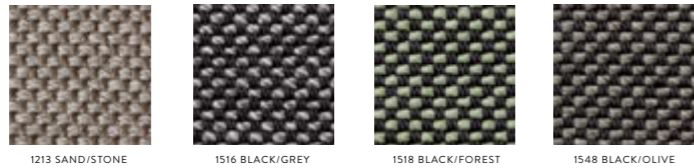
Gro

170x240, 200x300,
250x350 cm
Made to measure
Page 18



Hugin

200x300, 250x350 cm
Page 20



Munin

200x300, 250x350 cm
Page 22



Gimle

140x200, 170x240,
200x300 cm
Made to measure
Page 24



Gimle

140x200, 170x240,
200x300 cm
Made to measure
Page 26



Balder

140x200, 170x240,
200x300 cm
Made to measure
Page 28



Rolf

140x200, 170x240,
200x300 cm
Made to measure
Page 30



Fenris

140x200, 170x240,
200x300, 250x350 cm
Made to measure
Page 32



Tanne

140x200, 170x240,
200x300 cm
Made to measure
Page 34



New Freja

140x200, 170x240,
200x300 cm
Made to measure
Page 36



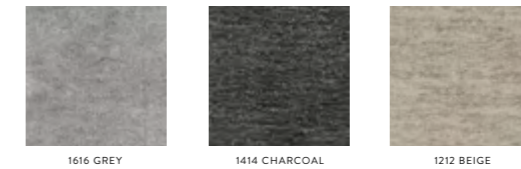
Gorm

140x200, 170x240,
200x300 cm
Made to measure
Page 38



Ask

160x230, 200x300 cm
Made to measure
Page 42



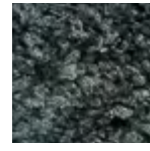
Gjall

160x230, 200x300 cm
Made to measure
Page 44-47



Gjall

160x230, 200x300 cm
Made to measure
Page 44-47



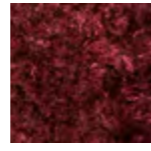
4848 PETROL



5252 AMBER



3030 PEARL



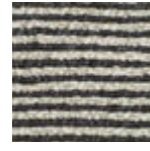
5353 RUBY



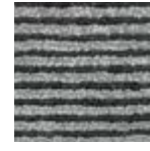
5151 TOPAZ

Odin

170x240, 200x300 cm
Made to measure
Page 48



1214 BEIGE/CHARCOAL



1615 GREY/BLACK

Loke

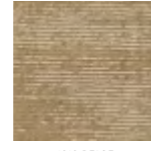
170x240, 200x300,
250x350 cm
Made to measure
Page 50



2727 LIGHT GREY



3737 DUSTY GREEN



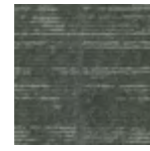
1212 BEIGE

Loke

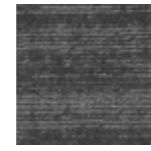
170x240, 200x300,
250x350 cm
Made to measure
Page 52



2020 TERRACOTTA



4848 PETROL



1616 GREY



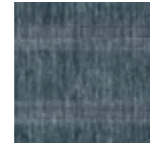
1414 CHARCOAL

Lily

170x240, 200x300 cm
Made to measure
Page 54



1414 SMOKE



2929 NIGHT SKY



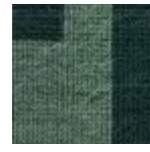
1212 MARBLE



1919 ORIENTAL RED

Ea

160x240, 200x280 cm
Made to measure
Page 56



1818 GREEN



1212 BEIGE



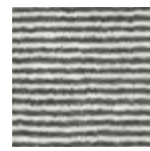
1414 CHARCOAL



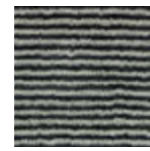
2929 OCEAN

Angelica

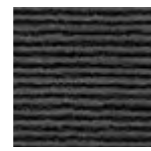
140x200, 170x240,
200x300 cm
Made to measure
Page 58



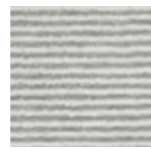
1411 CHARCOAL/OW



1416 CHARCOAL/GREY



1615 GREY/BLACK



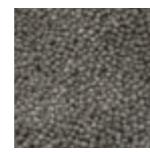
2711 LIGHT GREY/OW

Thor

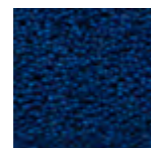
160x230, 200x300 cm
Made to measure
Page 60



1111 OFF WHITE



1616 GREY



2929 MIDNIGHT BLUE



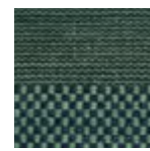
3232 OCHRE

Veronica

80x240, 140x200, 170x240,
200x300 cm
Made to measure
Page 62



1616 GREY



1818 GREEN



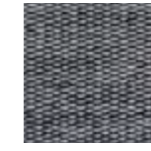
1717 BLUE

Bellis

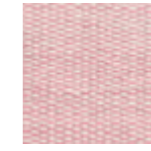
140x200, 170x240,
200x300 cm
Made to measure
Page 64



1416 CHARCOAL/GREY



1427 CHARCOAL/L.GREY



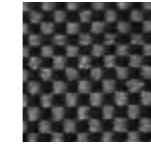
3011 ROSE/OFF WHITE



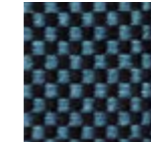
3811 LIGHT BLUE/OW

Myrtus

140x200, 170x240,
200x300, 250x350 cm
Made to measure
Page 66



1514 BLACK/CHARCOAL



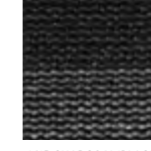
1529 BLACK/MIDNIGHT



1516 BLACK/GREY

Iris

140x200, 170x240,
200x300 cm
Made to measure
Page 68



1415 CHARCOAL/BLACK



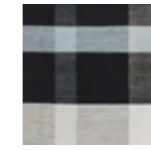
1517 BLACK/BLUE



1627 GREY/LIGHT GREY

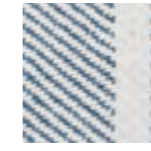
Camelia

170x240, 200x300 cm
Page 72

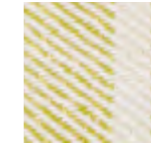


Tilia

170x240, 200x300 cm
Made to measure
Page 74



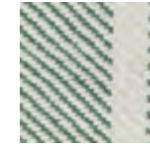
1710 BLUE/WHITE



2310 YELLOW/WHITE



3010 DARK NUDE/WHITE



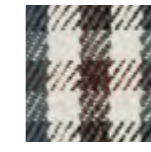
3710 DUSTY GREEN/WHITE

Lotus

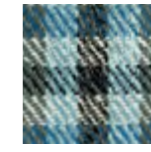
170x240, 200x300 cm
Made to measure
Page 76



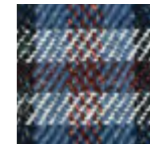
1615 GREY/BLACK



1642 GREY/MAHOGANY



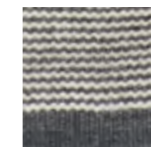
1715 BLUE/BLACK



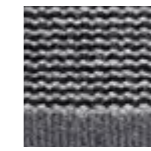
1742 BLUE/MAHOGANY

Erica

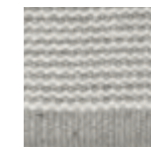
140x200, 170x240,
200x300, 250x350 cm
Made to measure
Page 78



1411 CHARCOAL/OW



1516 BLACK/GREY



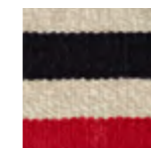
2711 LIGHT GREY/OW



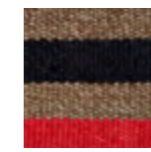
3811 LIGHT BLUE/OW

Rosemary

90x250, 140x200,
170x240, 200x300 cm
Made to measure
Page 80



1512 BLACK/BEIGE



1522 BLACK/MAUVE



1627 GREY/LIGHT GREY

Poppy

80x240, 140x200,
170x240, 200x300 cm
Made to measure
Page 82



2312 YELLOW/BEIGE



3812 LIGHT BLUE/BEIGE



3012 NUDE/BEIGE

Size Guide

A guide to help you choose the perfect size rug

Choosing the right size rug can be confusing and many have a tendency to pick a rug that is too small. Scrimping on the size can actually make a room look smaller, crowded, and cramped. As a general rule, bigger is better; a larger rug will make the room look bigger and more sophisticated.



Sofa area

A rug is like a focal point, an anchor in your room, and there are a few things to consider when creating the right ambience and look in the living room.

Choose a statement rug that covers an ample part of the floor around the sofa. As a guide line make sure the rug extends 30 cm to either side of the sofa and at least half way under the sofa.

Chunkier arm chairs should be fully on the rug or just off the rug without leaving a gap between the furniture and the rug.

Avoid a rug that only covers the floor around a coffee table and keep side tables either on or along the edge of the rug for a cleaner look. Lighter arm chairs can be partly on the rug.

Depending on the style, you can also choose to place the rug diagonally and partly under the sofa and chairs for a more casual, contemporary look.

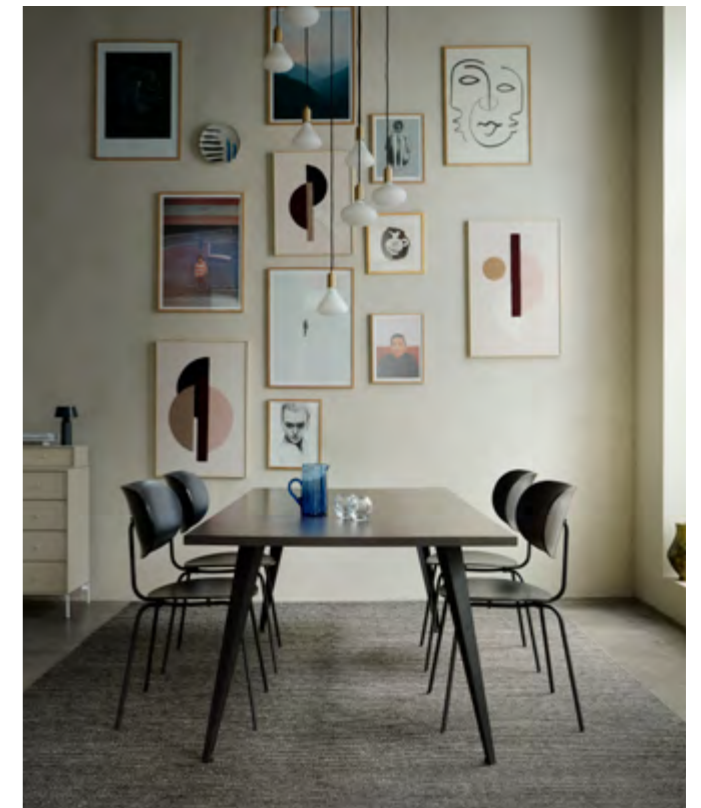


Bedroom

In the bedroom, a rug is an important part of the cosy, calming ambience, and there are different ways to play around with the look.

For a more classic look, place the bed and side tables fully on the rug. Choose a large rug providing comfortable, softness to step onto on either side of the bed.

For a more contemporary look, the rug can be placed partly under the bed. Make sure to create symmetry all the way around.



Dining area

When it comes to a rug under the dining table, practicality is as important as the look. If the rug is too small, the legs of the chairs will get caught and make the rug bulge. As a guide line, include 65 cm extra to allow space to comfortably pull out the chairs.

Made to measure

The perfect rug is a combination of beautiful texture and distinctive pattern with rich colours or earthy natural tones that accentuate and complement the style in your home.

We have found that the right fit makes all the difference and knowing that a rug has the power to transform a room, we offer most of our designs in bespoke sizes.

When you are looking to link together your sofas, need a little elegant square in a particular place or would like to fit your dining table and chairs on a rug without it looking cramped, you can order most of our rugs in your desired size.

Our designs can be varied in measurement, from a small 2 m² rug, to larger rugs up to 4.5 m wide and 10 metres in length. If the space needs a soft contrast, we can also make selected lines as circular rugs, which can make a room seem more spacious. We are dedicated to perfecting, refining and adding on to our selection of classic, contemporary designs and when it comes to size, we offer even more choices and flexibility.

If you need the perfect rug to fit a specific spot in your home, we have a made to measure service available for the majority of our designs.

As all our rugs are unique and hand-made, the size can vary slightly from the ordered size (+/- 4 %). A bespoke rug can be delivered within a maximum of four months. For a surcharge it's possible to get delivery in just 10 weeks.

Please note, that you will be invoiced for a minimum of two m² if you order a smaller rug. For round shaped rugs and rugs larger than 20 m² an additional 15% will be added to the fee. Some of our designs are unavailable as circular rugs or in the largest sizes (4.5 x 10 m), however please contact us with any requests.



Underlay

Structure: PES/Glass fibre yarn coated on both sides with a special anti-slip PVC-foam.

High quality underlay avoids rugs from slipping on smooth floors. The underlay is comfortable to walk on, offers impact sound insulation and protects your rug from premature wear. If flooring is treated with water-based lacquers, allow at least 3 months full drying time before using this product. Only suitable on floorings treated with solvent-free sealants. No adhesion when wet. Thickness app. 2.5 mm.

90x240, 130x190, 165x240, 190x290, 240x340 cm



How to care

We always recommend that you use an underlay to extend the life of your rug. An underlay ensures that the rug remains in a fixed position. It also reduces the risk of any staining.

CARE INSTRUCTIONS – RUGS OF WOOL, LINEN AND VISCOSE

Daily cleaning:

Vacuum your rug as needed. Never vacuum your rug with the brushes of the vacuum cleaner nozzle in the extended position.

You can also give the rug a gentle shake outside.

Do not beat the rug.

Spot cleaning, only woolen rugs:

Dab the spot very gently with a damp cloth soaked in carbonated water.

More thorough cleaning:

We recommend professional cleaning.

Some of our kilim rugs are reversible. We recommend that you turn your rug over every six months. Do not place your rug in direct sunlight.

CARE INSTRUCTION – OUTDOOR RUGS

Daily cleaning:

Everyday care will keep your outdoor rug looking fresh and new for longer. Gently vacuum as often as necessary, please avoid using the beater or brush bar on the vacuum cleaner.

For other cleaning options, sweep with a soft broom or gently shake the rug outside; never beat the rug.

If needed, rinse with cold water from the garden hose, and allow both sides to dry completely as any dampness might cause mold or other damages. For the same reason, it's important to always keep the area under the rug clean and dry. The rug is also suitable for indoor use. If used indoor, we always recommend an underlay to ensure that the rug remains in a fixed position, to reduce the risk of any staining, and to extend the life of the rug.

Spot cleaning:

Do not beat or shake the rug. Simply lay it out on a flat surface.

More thorough cleaning:

We recommend professional cleaning. Do not expose the rug to salt or chlorine.



Certificates



BS EN 13501-1 BFL-S1

ANGELICA
BALDER
BELLIS
CALLA
CAMELIA
FENRIS
GIMLE
GRO
IRIS
LOKE
LOTUS
MYRTUS
NEW FREJA
NJORD
POPPY
ROSEMARY
TANNE
TILIA
VERONICA



BS EN 14215:2013
CLASS 22 GENERAL
DOMESTIC USE

ANGELICA
CALLA
CAMELIA
FENRIS
GIMLE
GISLI
GRO
LOTUS
TILIA



BS EN 14215:2013
CLASS 23 HEAVY
DOMESTIC USE

BALDER
BELLIS
ERICA
FELICIA
IRIS
MYRTUS
NEW FREJA
NJORD
POPPY
ROSEMARY
TANNE
VERONICA

We accept no liability for designs, sizes and colours that are no longer available. We accept no liability for any inaccuracy in terms of colour reproduction in the catalogue. Most of our rugs are hand-made and there is a variation of size of up to +/-4%. Irregularities in colour and weaving are characteristics of hand-made rugs.

Thanks

TO ALL OF YOU

&Tradition
A Hint of Neon
Amanda Betz
Anne Black
Arhøj Studio
Berit Mogensen Lopez
Carl Hansen
Ferm Living
FLOS Scandinavia
HAY
Henrik Godsk
Kristina Dam Studio
Kristina Krogh
Kvadrat
Manufakture
Meyer Lavigne
Moebe
Mogens Koch
Nomess
Overgaard Dyrman
Please Wait to Be Seated
Raawii
Ro Collection
Roomstore
Sigrid Buus
Skovshoved Møbelfabrik
Snedker Studio
Wulffwinding

Special thanks to:

House of Finn Juhl/Onecollection, A.Petersen, Yume, Getama,
Skagerak, Langelinie Pavillonen, Louise Roe and Erik Jørgensen

PHOTOGRAPHER - Bjarni B. Jacobsen

STYLING - Laura Scheuer Trøstrup / thesweetspot.dk

GRAPHIC PRODUCTION - Graphic Unit

Fabula Living ApS, Teglstrupvej 33, DK-2100 København Ø
+45 2233 3966, info@fabulaliving.dk, www.fabulaliving.dk

Showroom, Frederiksgade 1, 3., DK-1265 København K
Opening hours Monday to Friday 10:00-16:00

Fabula Living creates high quality hand-made contemporary rugs blending a strong Scandinavian style and tradition with the ancient techniques of weaving